



QUIKLII™



DECKSPACER™

THE NEW STANDARD IN
DECK
INSTALLATION

SIMPLY FIT & FIX FOR A TRADE QUALITY
INSTALLATION IN A FRACTION OF THE TIME



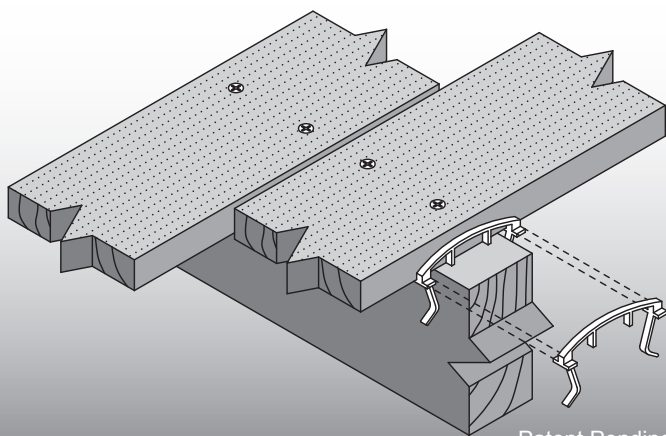
SAVE TIME & COST
DURING INSTALLATION



ACHIEVE A TRADE
QUALITY RESULT



PROTECT & PRESERVE
YOUR INVESTMENT



Patent Pending

**STEP
ONE**

Fit **DECKSPACER™** over
joist against decking board

**STEP
TWO**

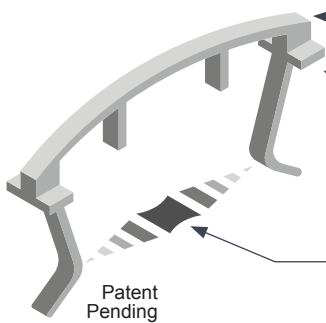
Fix next decking board up
against the **DECKSPACER™**

You can do it the hard way, or
you can do it  **QUIKLII™**

Introducing **DECKSPACER™**



DECKSPACER™ from **QUIKLII™** is a unique patent pending design UV-stable plastic spacer that sets out and maintains a uniform gap between decking boards in addition to protecting the deck sub-frame from potentially damaging dirt and water accumulation on the top face of the joists.



CURVED TOP

Ensures dirt and liquids don't sit on top of joist which could cause damage over time

SECURE FIT

Locating tabs enable spacer to be securely held in position by decking board

FLEXIBLE

Design allows for joist widths of 35mm to 45mm to be accommodated

Product Coverage Guide

Allow for 25 spacers for every square metre of decking*

*90mm board width with 450mm joist spacing utilising 4mm wide **DECKSPACER™**.

Please Note: Actual coverage rate may vary depending on installation.

Recommended for joist widths of 35mm – 45mm



For more information please call **1300 716 188** or visit **www.quiklii.com**

Decking boards are spaced to accommodate the seasonal movement of timber due to changes in moisture content. The required gap size will depend on the species, board width, and the moisture content of the timber at the time of construction. Adequate ventilation below the decking will limit seasonal variation in moisture content. Refer to the QUIKLII website for additional information and recommendations.



You can do it the hard way, or you can do it  **QUIKLII™**